

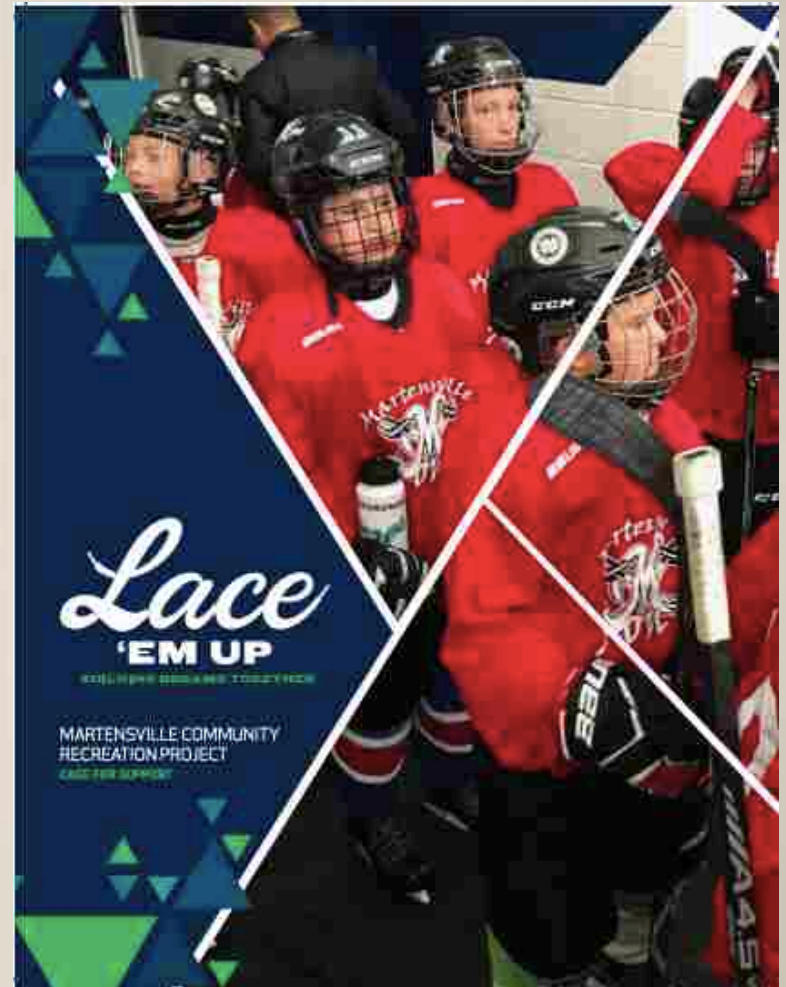
Welcome to: Making Your Case

Presented by Heather Macdonald
Associate, DCG Philanthropic Services Inc.

SSFRE, October 2, 2019

What is a Case for Support?

A written presentation that tells people how your organization enriches lives and why their support is vital to making that difference.



When I was a child, our Elders told stories of how important the buffalo were to our people. I knew the stories, but I never saw the buffalo. Now we can bring those stories – bring our history – full circle at Wanuskewin for the next generation.

– Elder Melvina Eagle & her granddaughter, Summer
WHITECAP DAKOTA FIRST NATION

Put yourself
in the shoes
of the person
reading your
Case for
Support.

Every Case for Support must answer:

- Why us?
- Why now?
- Why should the prospective donor care?

-Tom Ahern

RENEWING AN AGING HOME

IMAGINE BEING EXCITED by the prospect of:

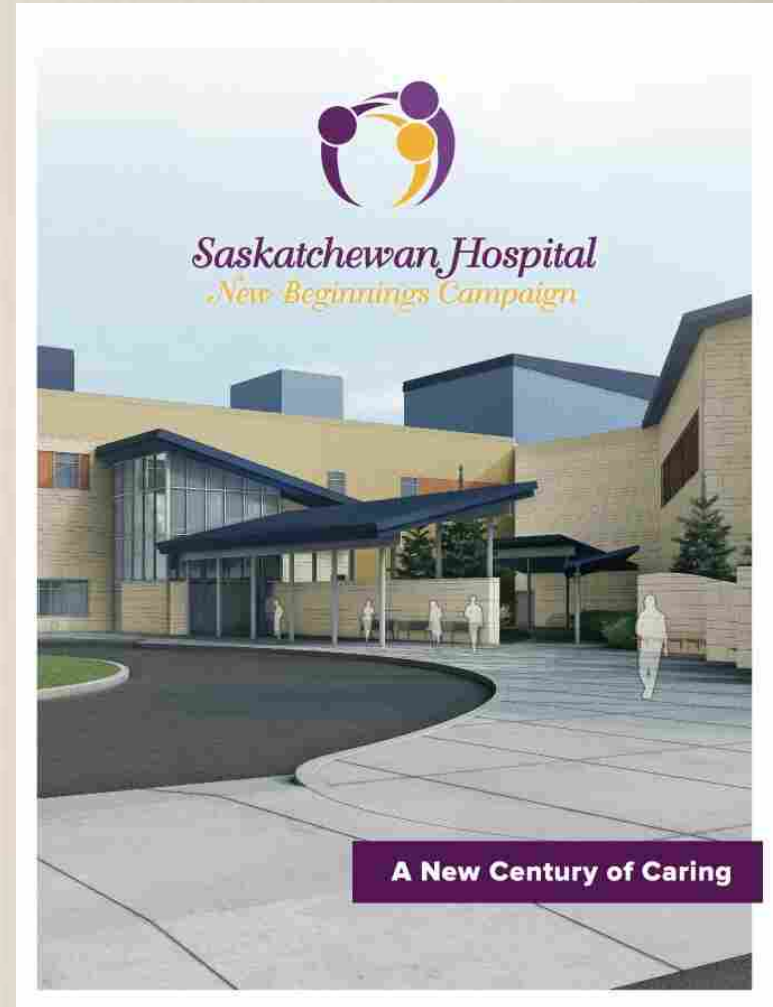
- sitting near the window in your room without growing cold;
- using the toilet in a bathroom instead of a commode in your room, or
- getting out to explore and interact with people in the community.

These improvements will make a huge difference to residents of St. Ann's Home and those involved in their lives.

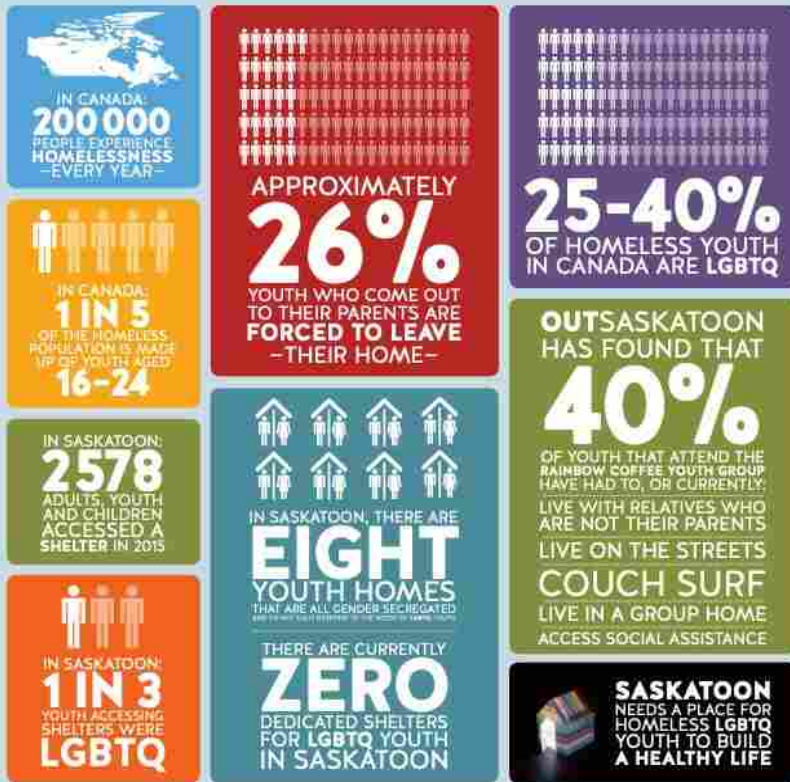
Only five of the 80 residents are able to use their bathrooms independently and the washroom doors are too narrow for wheelchairs. Commodes sit in resident rooms or caregivers search among those scattered along crowded hallways.

Every Case for Support must also answer:

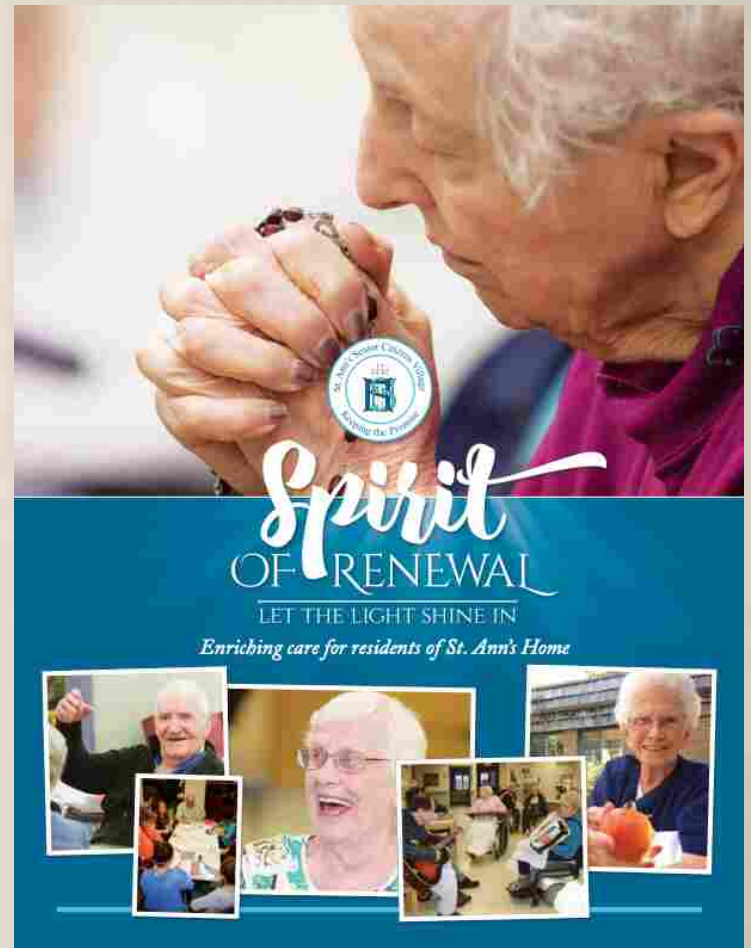
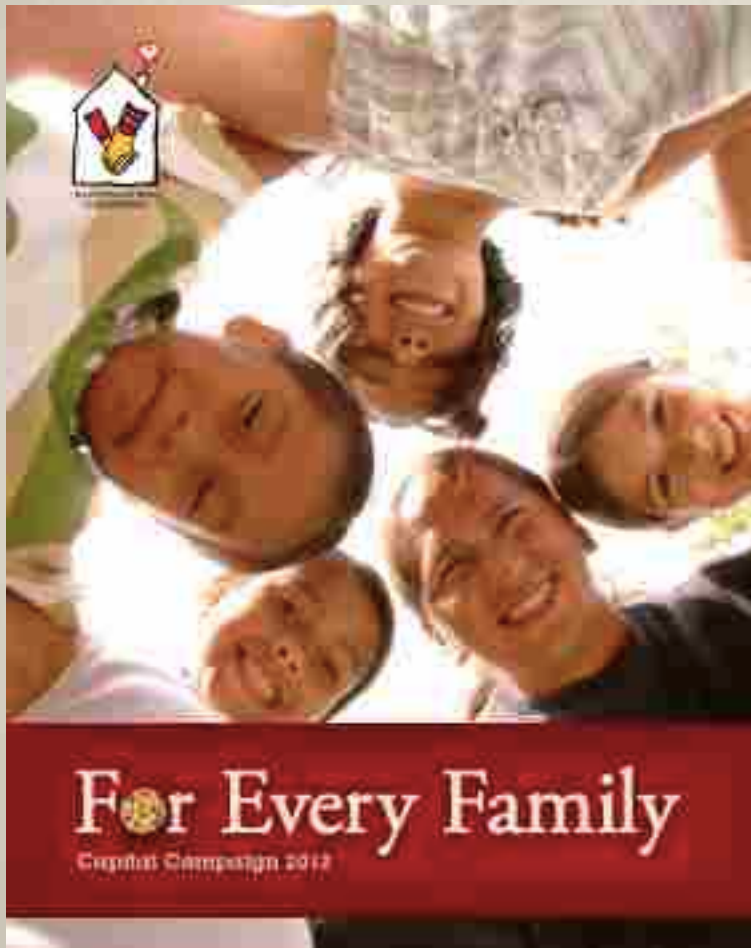
- What does the project involve?
- How will donations be spent?
- How much is required and what is the plan for raising it?



Ways to answer the questions: stories and statistics



More than words



DCG

DCG PHILANTHROPIC SERVICES INC.

Let's make a difference, together.